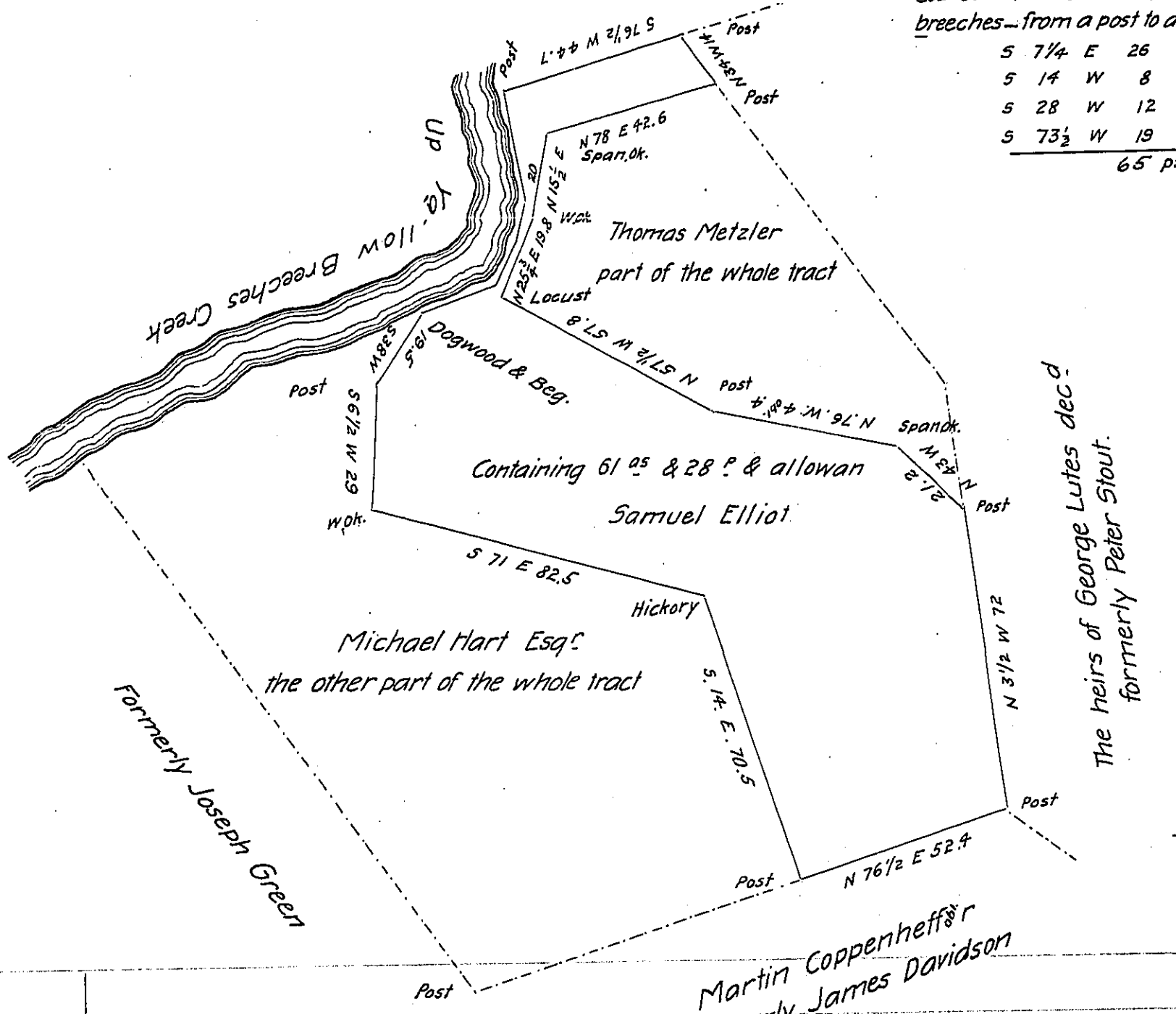


Courses & distances up Yellow  
breches—from a post to a dogwood

S 7 1/4 E	26
S 14 W	8
S 28 W	12
S 73 1/2 W	19
65 ps.	



Situate in Fairview (late Newbury) Township in the County of York containing as above set forth sixty one acres twenty eight perches & the usual allowance of six per Cent for roads &c. Being part of a larger tract of  $\frac{159 \frac{3}{4}}{172.68}$  as of land originally surveyed by Thomas Cookson late D.S. on the 9<sup>th</sup> day of April 1745 In pursuance of a warrant granted to Samuel Elliot date<sup>d</sup> the 17<sup>th</sup> day of December 1742 The above part resurveyed and divided off from the said larger tract on the 29<sup>th</sup> day of October 1812 at the request of the then owner Adam Brenizer— And now at the request of the present owners Thomas Metzlar & Jonathan Lutes the same is returned for confirmation the 9<sup>th</sup> day of January Anno Domini 1816

To Richard T. Leech Esq: }  
 Surveyor General }  
 Harrisburg Pa }  
 Per }  
 Jacob Spangler D.S.

IN TESTIMONY that the above is a copy of the original remaining on file in the Department of Internal Affairs of Pennsylvania, made conformably to an Act of Assembly approved the 16th day of February, 1833, I have hereunto set my Hand and caused the Seal of said Department to be affixed at Harrisburg, this thirtieth day of November 1904

*Loae P. Brown*  
 Secretary of Internal Affairs.